

# Banvel VM herbicide

## technology sheet

Tried and trusted formulation for effective brush and broadleaf-weed control.

- Proven, broad-spectrum control of coniferous and deciduous brush species
- Effective burndown and residual control of annual and perennial broadleaf weeds
- Rapid uptake by roots and shoots
- Low volatility formulation designed for industrial non-crop areas, pastures and rangeland

### Active ingredient

Dicamba – Group 4

### Formulation

Solution

### One case contains

2 x 10 L jugs

### Storage

Keep dry and store away from other pesticides, fertilizers, food or feed.

### How it works

Banvel® VM is a selective brush and broadleaf herbicide. Rapidly taken up by roots and foliage, Banvel VM moves quickly throughout the entire plant. It mimics the plants' own auxins, a group of naturally occurring hormones crucial to plant development and growth, resulting in uncontrolled cell division, irregular growth and finally weed death.

### Weeds controlled

#### Brush<sup>1</sup>

Alder, aspen poplar, balsam fir, balsam poplar, basswood, birch, black cottonwood, bur oak, cherry, elm, hickory, pine, prickly rose, red oak, spruce, sugar maple, tamarack, vine maple, western snowberry, white ash, white birch, white cedar, wild rose, willow, wolf willow

#### Broadleaves

Apply to actively growing weeds.

Absinthe<sup>2</sup>, Canada thistle, common ragweed, curled dock<sup>2</sup>, diffuse knapweed, English daisy, field bindweed, giant ragweed, goat's beard, goldenrod, ground cherry, kochia<sup>1</sup>, leafy spurge<sup>2</sup>, pasture sage, perennial sow thistle, poison ivy<sup>1</sup>, poverty weed, Russian thistle<sup>1</sup>, scentless chamomile<sup>2</sup>, sheep sorrel, tansy ragwort, thyme-leaved spurge, wild carrot<sup>1</sup>

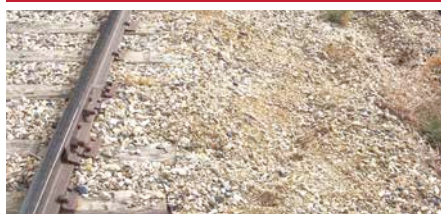
<sup>1</sup> Must be tank-mixed with 2,4-D amine or low volatility ester. See label for rates.

<sup>2</sup> Top growth control only.

### Effective burndown and residual control



Untreated control



Banvel VM (2 L/ha)

Source: BASF Canada, SK



We create chemistry

## Environment, health and safety

### General information

Combustibility:	Non-combustible
Regulation:	Not regulated by TDG or WHMIS
Toxicity:	Low (Signal Word: Caution)
Re-entry interval:	Once spray residue has dried. 12 hours after application for pasture or rangeland.

---

### User toxicology

Oral LD <sub>50</sub> :	3,512 mg/kg
Dermal LC <sub>50</sub> :	>2,000 mg/kg
Skin irritant:	Mildly irritating
Eye irritant:	Moderate but temporarily irritating
Bioaccumulation:	No
Carcinogenic:	Non-carcinogenic
Mutagenic:	Non-mutagenic

---

### Ecotoxicity

Birds:	Practically non-toxic (LD <sub>50</sub> > 5,632 mg/kg)
Fish:	Practically non-toxic to slightly toxic (LC <sub>50</sub> > 100 mg/L)
Aquatic insects:	Practically non-toxic to slightly toxic (EC <sub>50</sub> > 1,000 mg/L)

---

### Environmental fate

Volatility:	Moderate. Because dicamba is present as diglycolamine salt, Banvel VM is less volatile than some other dicamba formulations.
Persistence:	Half-life in soil is 1 to 4 weeks (typically 2 weeks).
Erosion:	The potential for movement of dicamba on eroded soil is low.
Leaching:	Dicamba can leach through sandy soils or where the water table is shallow.
Run-off:	The potential for movement of dicamba through surface run-off is high.
Buffer zones:	Leave an adequate downwind buffer zone to sensitive plants. Refer to label for information.
Grazing restrictions:	<b>Do not</b> permit lactating dairy animals to graze fields within 7 days after application. <b>Do not</b> harvest forage or cut hay within 30 days after application. Withdraw meat animals from treated fields at least 3 days before slaughter.

---

### Handling precautions

Read Banvel VM label before using.  
Use goggles, gloves and coveralls when mixing.  
Wash thoroughly after using. Launder clothes separately.

---

### First aid

Eye contact:	Flush with water for 15 to 20 minutes
Skin contact:	Wash with soap and water
Inhalation:	Remove to fresh air and seek immediate medical attention
Ingestion:	Sip water, <b>do not</b> induce vomiting and seek immediate medical attention

**Call 1-800-454-2673 for 24-hour assistance.**

---

### For more information

Visit [www.BetterVM.ca](http://www.BetterVM.ca).

**Always read and follow label directions.**